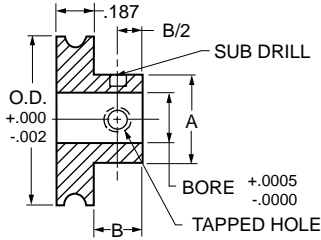
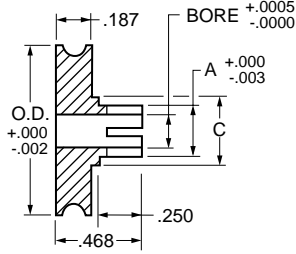


- FOR 1/8" ROUND BELT
- PIN TYPE

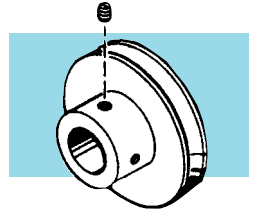
- 1/8", 3/16" & 1/4" BORES
- CLAMP TYPE



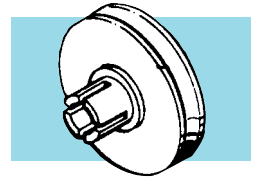
PIN-TYPE HUB



CLAMP-TYPE HUB



PIN-TYPE HUB



CLAMP-TYPE HUB

NOTE: Groove has .062 Radius, .062 Deep

MATERIAL: 303 Stainless Steel

Catalog Number		O.D. +.000 -.002	BORE +.0005 -.0000	A		B	C	Pin Type	
Pin Type Hub	Clamp Type Hub			Pin	Clamp			Set Screw	Sub Drill
S1083Y-PA-01	S1183Y-PD-01	.500	.1248	.312	.188	.187	.250	#2-56	.029
S1083Y-PA-02	S1183Y-PD-02	.750							
S1083Y-PA-03	S1183Y-PD-03	1.000							
S1083Y-PA-04	S1183Y-PD-04	1.500							
S1083Y-PA-05	S1183Y-PD-05	2.000							
S1083Y-PA-06	S1183Y-PD-06	2.500							
S1084Y-PB-01	S1184Y-PE-01	.500	.1873	.375	.250	.218	.312	#4-40	.040
S1084Y-PB-02	S1184Y-PE-02	.750							
S1084Y-PB-03	S1184Y-PE-03	1.000							
S1084Y-PB-04	S1184Y-PE-04	1.500							
S1084Y-PB-05	S1184Y-PE-05	2.000							
S1084Y-PB-06	S1184Y-PE-06	2.500							
S1086Y-PC-01	S1186Y-PF-01	.500	.2498	.500	.312	.250	.375	#6-32	.086
S1086Y-PC-02	S1186Y-PF-02	.750							
S1086Y-PC-03	S1186Y-PF-03	1.000							
S1086Y-PC-04	S1186Y-PF-04	1.500							
S1086Y-PC-05	S1186Y-PF-05	2.000							
S1086Y-PC-06	S1186Y-PF-06	2.500							
S1086Y-PC-07	S1186Y-PF-07	3.000							
S1086Y-PC-08	S1186Y-PF-08	3.500							